

Name: **EARLS**
Date: November 16, 2015

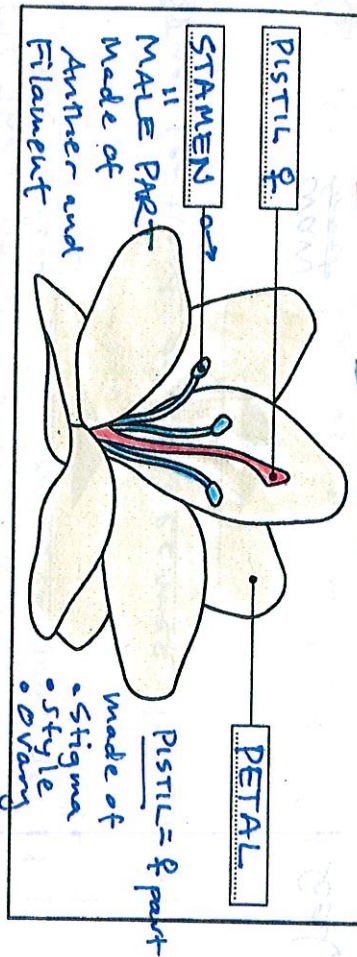
SCIENCE > CELLULAR LIFE AND GENETICS > POLLINATION

ANSWERS

LABEL & COLOR

CLASS COPY

FEMALE PARTS: red MALE PARTS: blue PETALS: yellow



SEQUENCE SKILLS

Number the steps in the right order.

3		1		4		2	
	Fertilization happens when the male pollen and female ovule combine.		A bee carries pollen to a new flower.		The fertilized ovule grows into a seed.		A pollen grain is collected by the pistil.

THINK ABOUT IT

Can you think of at least two different ways that seeds can travel?

Seeds can travel by water (H₂O) Cocorns
Seeds can travel by wind (Dandelions)
Seeds can travel by birds when they eat
and excrete.
Seeds can attach themselves to animals

Name: **EARLS**
Date: November 16, 2015

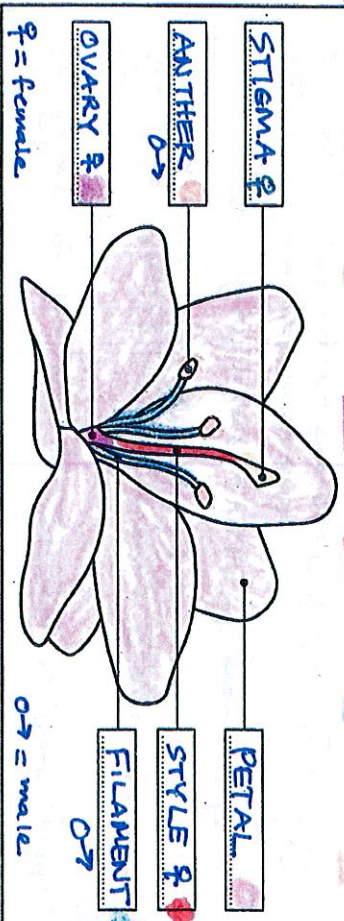
SCIENCE > CELLULAR LIFE AND GENETICS > POLLINATION

ANSWERS

LABEL & COLOR

CLASS COPY

STIGMA: yellow PETAL: pink OVARY: purple STYLE: red FILAMENT: blue ANTHER: orange



FILL IN THE BLANK

Use the labels above to fill in the blanks below.

- The STAMEN contains all the male parts of the flower, including the **ANTHER** and **FILAMENT**.
- The PISTIL contains all the female parts of the flower, including the **STIGMA**, **STYLE** and **OVARY**.

THINK ABOUT IT

Can a flowering plant have more than one kind of pollinator? Explain.

Yes! The most common pollinator is the honey bee, but other pollinators include The wind, bats, hummingbirds, insects and butterflies.

Name: EARLS
Date: November 16, 2015

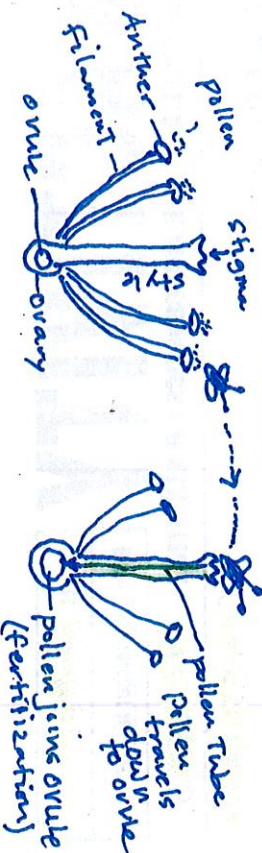
Answers

FLOW CHART

Describe the steps that take place during pollination.

Class Copy

- ① A pollinator such as a honey bee lands on the anther and picks up pollen (male sex cell)
- ② The pollinator flies to another flower and lands on the sticky stigma transferring the pollen.
- ③ A pollen tube grows down the style to the ovary and pollen travels down the pollen tube.
- ④ The pollen joins the ovule in the ovary and fertilization takes place.
- ⑤ The fertilized ovule becomes the seed
- ⑥ The ~~seed~~ ovary develops into a fruit and seed becomes a new plant.



1999-2014 BrainPOP. All rights reserved.

Visit us at <http://www.brainpop.com>

Name: EARLS
Date: November 16, 2015

Answers

DEFINE

Can you explain the terms below in your own words?

Class Copy

- POLLINATION:** The process where pollen from one plant lands on the stigma of another plant.
- FERTILIZATION:** When the pollen travels down the pollen tube and joins with the ovule (egg).
- STAMEN:** the male part of the flower; includes the anther and filament.
- PISTIL:** the female part of the flower; includes stigma, style and ovary.
- POLLINATOR:** An organism such as a honey bee that transfers pollen from one flower to another.
- HONEYBEE:** The most common pollinator; moves pollen so fertilization can occur.
- ANTHER:** The top part of the male part (stamen) that produces pollen.
- OVULE:** The egg found in the ovary; it becomes the seed once it is fertilized.
- SEED:** This is the fertilized ovule; it grows into a new plant.
- Choose an additional term from the movie to define:
- STIGMA** - the sticky top part of the style that receives the pollen.

1999-2014 BrainPOP. All rights reserved.

Visit us at <http://www.brainpop.com>

style - holds up the stigma; connects the stigma and the ovary.

Pollen Tube - this grows in the style once pollen lands on the stigma.