

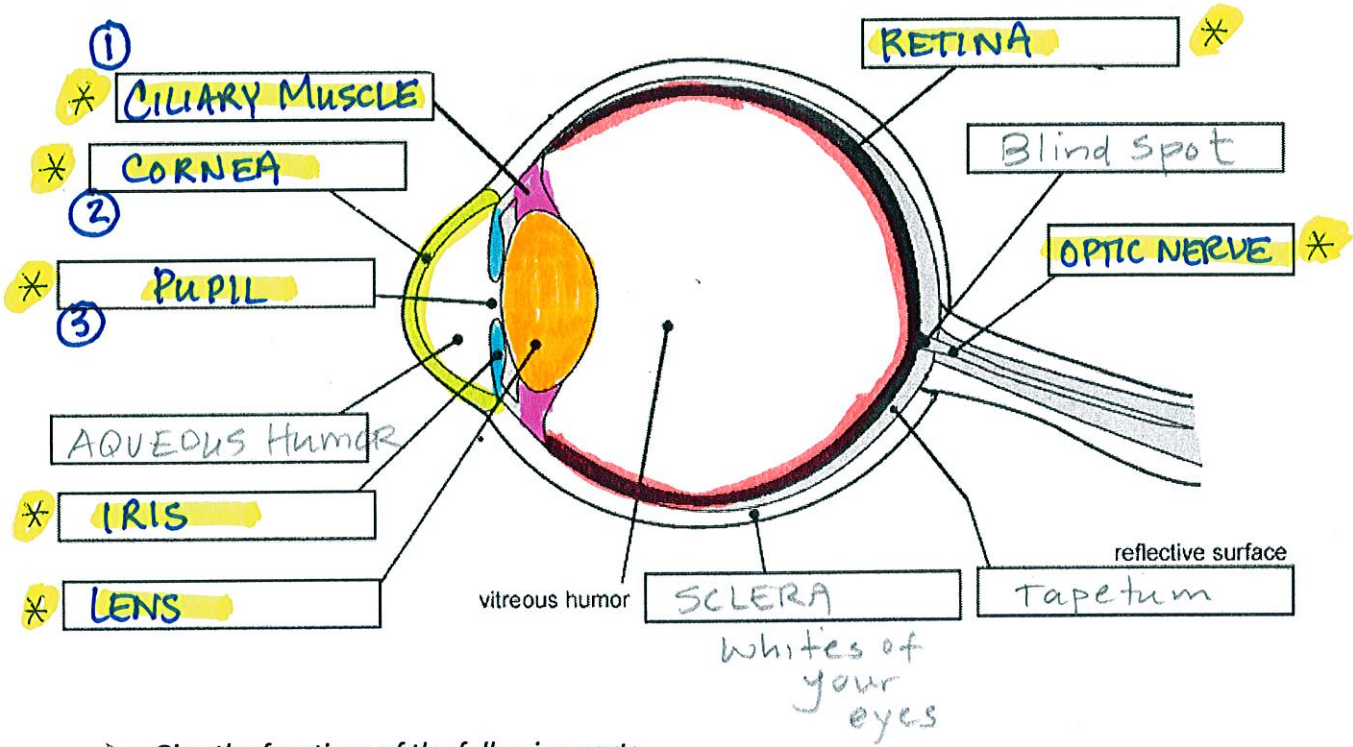
Name ANSWERS

Period _____

Date _____

Eye Parts and Functions

➤ Label the parts of the cow eye below. Color the 7 eye parts a different color.



➤ Give the functions of the following parts.

1. Cornea- transparent protective covering; refracts light
2. Iris- muscle that helps control size of pupil; colored
3. Pupil- opening which allows light into eye; changes size
4. Lens- Convex structure which refracts light; causes light rays to converge and creates an image
5. Retina- light sensitive cells; converts image to electrical signal
6. Optic Nerve- carries electrical signal to brain to be interpreted
7. Ciliary Muscle- attached to the lens; controls the shape of the lens so you can focus on near and far objects