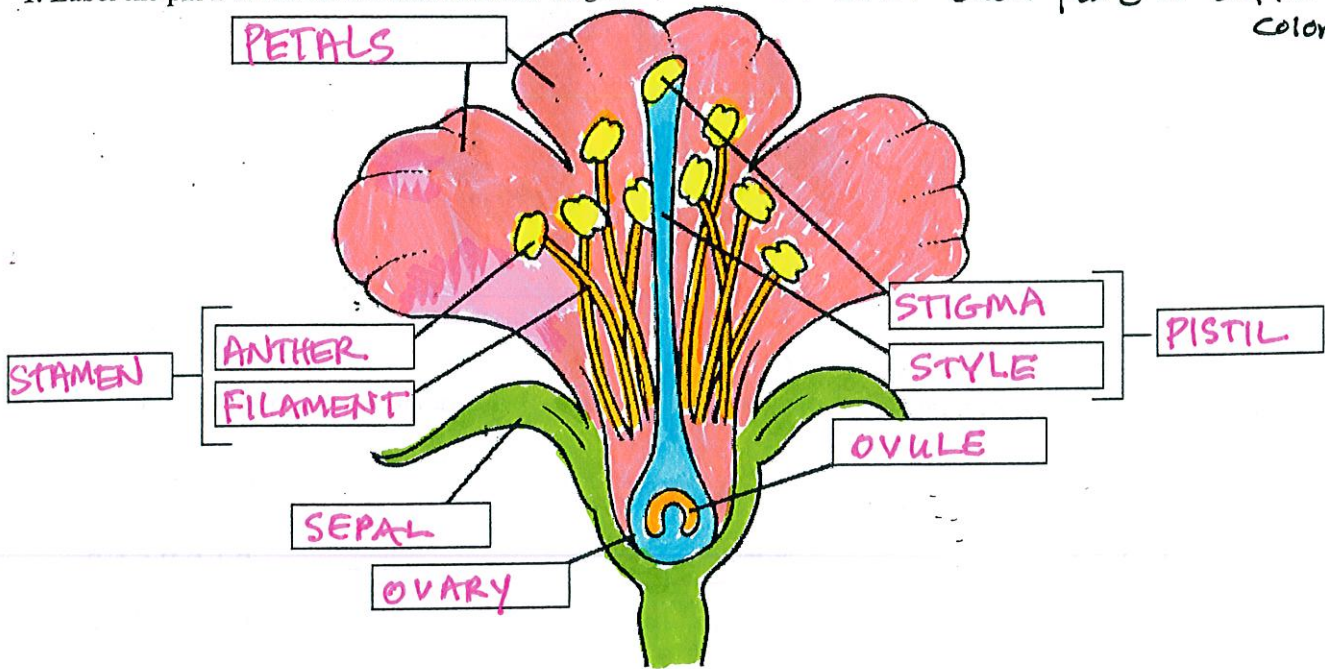


Flower Basics

Name **EARLS' ANSWERS**

1. Label the parts of the flower shown in the diagram below.

2. Color each part a different color.



2. Identify each part of the flower described below using the words in the word list.

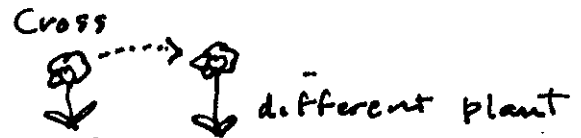
- PISTIL - The female part of a flower
- SEEDLING - A small plant that is just starting to grow
- ANTHER - The place where pollen develops and is stored
- OVULE - The female sex cell in a plant
- FERTILIZATION - Occurs when the sperm and egg cells unite
- NECTAR - A sugary substance that attracts insects
- POLLEN - The male sex cell in a plant
- STAMEN - The male part of a flower
- FILAMENT - The stalk that supports the anther
- STIGMA - The part of the pistil that receives the pollen (sticky)
- STYLE - Part that connects the stigma and ovary
- SEPAL - Protective leaf-like enclosure for the flower bud
- FRUIT - The ripened ovary of a plant that contains seeds
- PERFECT - Flower that contains both male and female parts
- IMPERFECT - Flower that lacks either male or female parts
- PETALS - The structures that make up the outside of the flower and may be colored or contain nectar or perfume glands

- Word List:**

 - Anther
 - Fertilization
 - Filament
 - Fruit
 - Imperfect
 - Nectar
 - Ovary
 - Perfect
 - Petals
 - Pistil
 - Pollen
 - Seedling
 - Sepals
 - Stamen
 - Stigma
 - Style

ovule

Image: <http://www.smithlifescience.com/SciFlowerDiagramBlank.jpg>



3. What is the difference between self-pollination and cross-pollination?

Self pollination occurs when pollen from the anther of one flower lands on the stigma of another flower on the same plant, or when pollen from the flower lands on the stigma of the same flower.

Cross pollination occurs when pollen lands on the stigma of a flower from a different plant.

Challenge: Pollinators are important to the natural world as well as humans! Can you unscramble the names of these pollinators?

Ants NAST

Butterflies TUBTRELIFES

Bats TSBA

Flies LIEFS

Bees EBES

Beetles ETEBELS

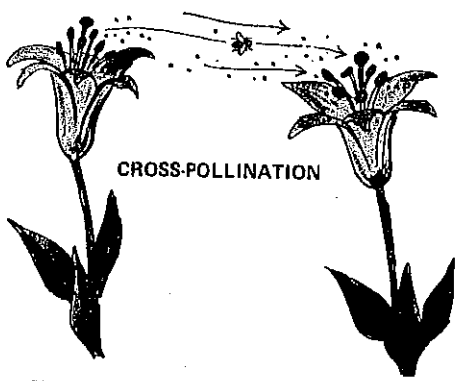
Moths THOMS

True Bugs TURE UBSG

Birds DRBIS

Did you know?

Honey bees are the most common pollinators. What insect comes in second place? Butterflies



Plants can be cross-pollinated by insects that carry pollen grains from one flower to another.

