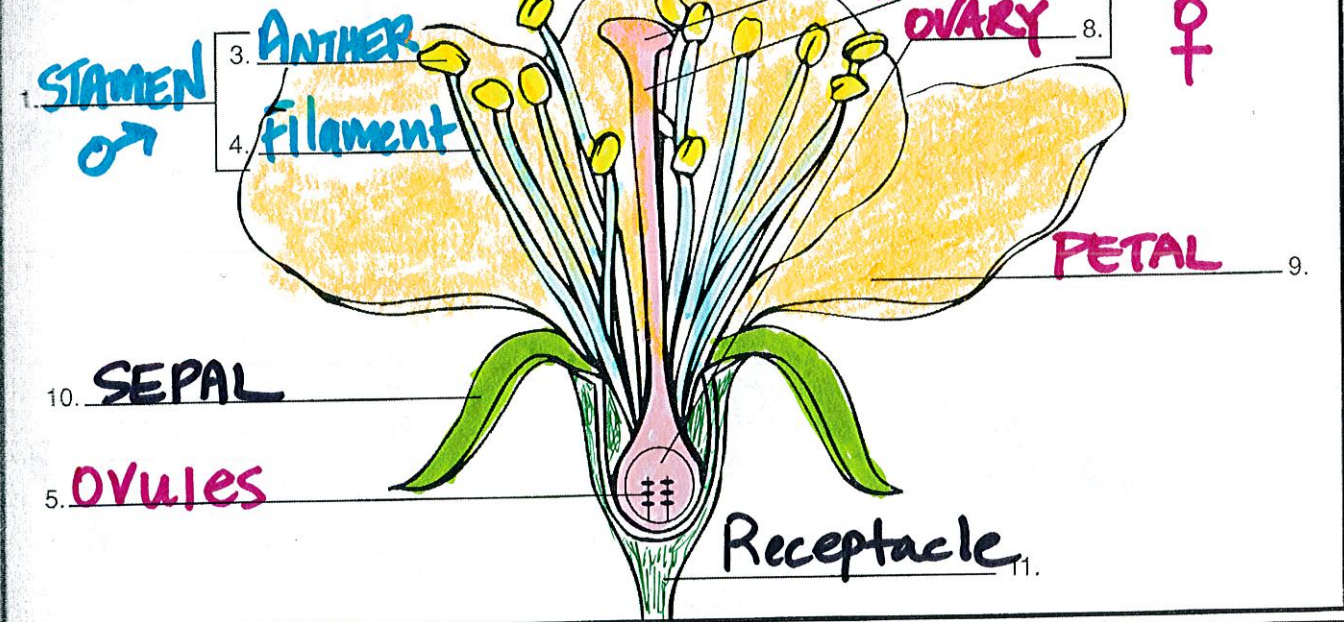


Playing An Important Part

- COLOR each part a different color.



Parts Of A Flower

- anther
- ovules
- pistil
- sepal
- stigma
- ovary
- filament
- petal
- receptacle
- stamen
- style

Use the diagram above and the clues to help you fill in the correct plant parts.

1. STAMEN —male reproductive part of a flower
2. PISTIL —female reproductive part of a flower
3. ANTHER —produces pollen grains which develop sperm
4. FILAMENT —supports the anther
5. OVULES —become the seeds when sperm cells fertilize the egg cells
6. STIGMA —sticky, pollen-receptive part of the pistil
7. STYLE —the stalk of the pistil down which the pollen tube grows
8. OVARY —contains the ovules and becomes the fruit
9. PETAL —colorful part of a flower used to attract insects and birds
10. SEPAL —protects the bud of a young flower
11. Receptacle —reproductive parts of a plant are attached here

Bonus Box: What do you think is the most important part of the flower? Defend your answer on the back of this paper.